



Insatech Marine brings process instrumentation and automation to the marine segment. The main products focus on fuel management and optimization of ship performance as well as precision bunker measurements.

Insatech delivers full installation, commissioning, calibration, service and support for all the products.

Monitoring Systems

Fuel Consumption System



The Fuel Consumption System gives you great insight into your ships fuel consumption. Coriolis mass flow meters ensure accuracy better than 0.3% of nominal flow measured directly in mass. The marine fuel consumption can be monitored and compared with position and speed as well as historical data. The insight into fuel consumption will help you determine the exact benefit of fuel saving as well as freeing man-hours for other important things. [More](#)

Performance Monitoring System



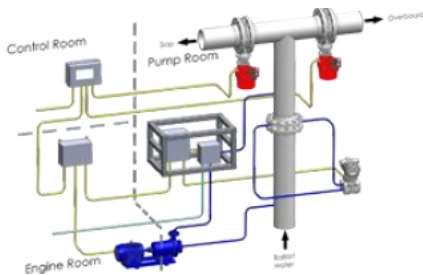
The Performance Monitoring System is based on high accuracy measurements of key factors such as Fuel Consumption measured by mass flow meters, shaft power by Torque meter and generator output by power meters. The data is collected, displayed, stored and distributed automatically by the system, and can be used for monitoring of the performance of the vessel as is and over time. [More](#)

Bunker Management System



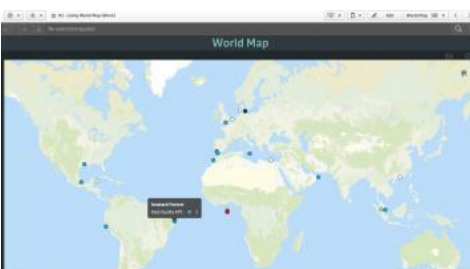
A safeguard against manipulation of bunkered marine fuel oil. The system uses Coriolis mass flow meters to measure the mass of the fuel oil directly, so you do not have to rely on conversions from volume. Furthermore the system automatically adjusts for temperature variations and is able to detect any air in the oil as well as vent any excessive air. With this BMS you get the amount of fuel oil you have paid for. [More](#)

ODME



The ODME is a field tested and proven solution that complies with current and future MARPOL's MEPC requirements and is equipped with oil content meter, flow meter, GPS functionality, data logging and programming that ensures minimum of action from the operator and supervisor. [More](#)

Fleet Viewer



Use ship data for enhanced decision-making and cost reductions on ship and shore. For one vessel or the entire fleet. [More](#)

*Become **MRV** and **IMO** compliant with Insatech reporting. Using fuel consumption or performance systems, Insatech can help you with easy reporting and making sure no data is missing on board your vessels. [More](#)

Water Test Kits



Potable Water Test Kit

With this high quality drinking water test kits, you can be sure that crew members, employees, contractors and passengers are able to rely on adequate supplies of hygienic water at all times. [More](#)



Ballast Water Test Kit

The Ballast Water Management Convention was adopted on 13.02.2004 and ratified on the 08.09.2016 and the aim was to prevent the spread of invasive aquatic species and pathogens, carried in the ballast water and sediments of ships, being discharged into the sea where they could harm local species and human health. [More](#)



Sewage Effluent Test Kit

A set of regulations regarding the discharge of sewage into the sea from ships, including regulations regarding the ships' equipment and systems for the control of sewage discharge, the provision of port reception facilities for sewage, and requirements for survey and certification. [More](#)



Cooling Water Test Kit

In addition to the issues faced with boiler water, cooling water systems require consideration of microbiological contamination, affecting heat exchangers. [More](#)

Boiler Water Test Kit

The most common issues with boilers and heating systems are scale formation and corrosion, resulting in reduced efficiency, safety and system life. It is therefore necessary to develop a maintenance and treatment regime to mitigate these effects, achievable using specific chemicals [More](#)